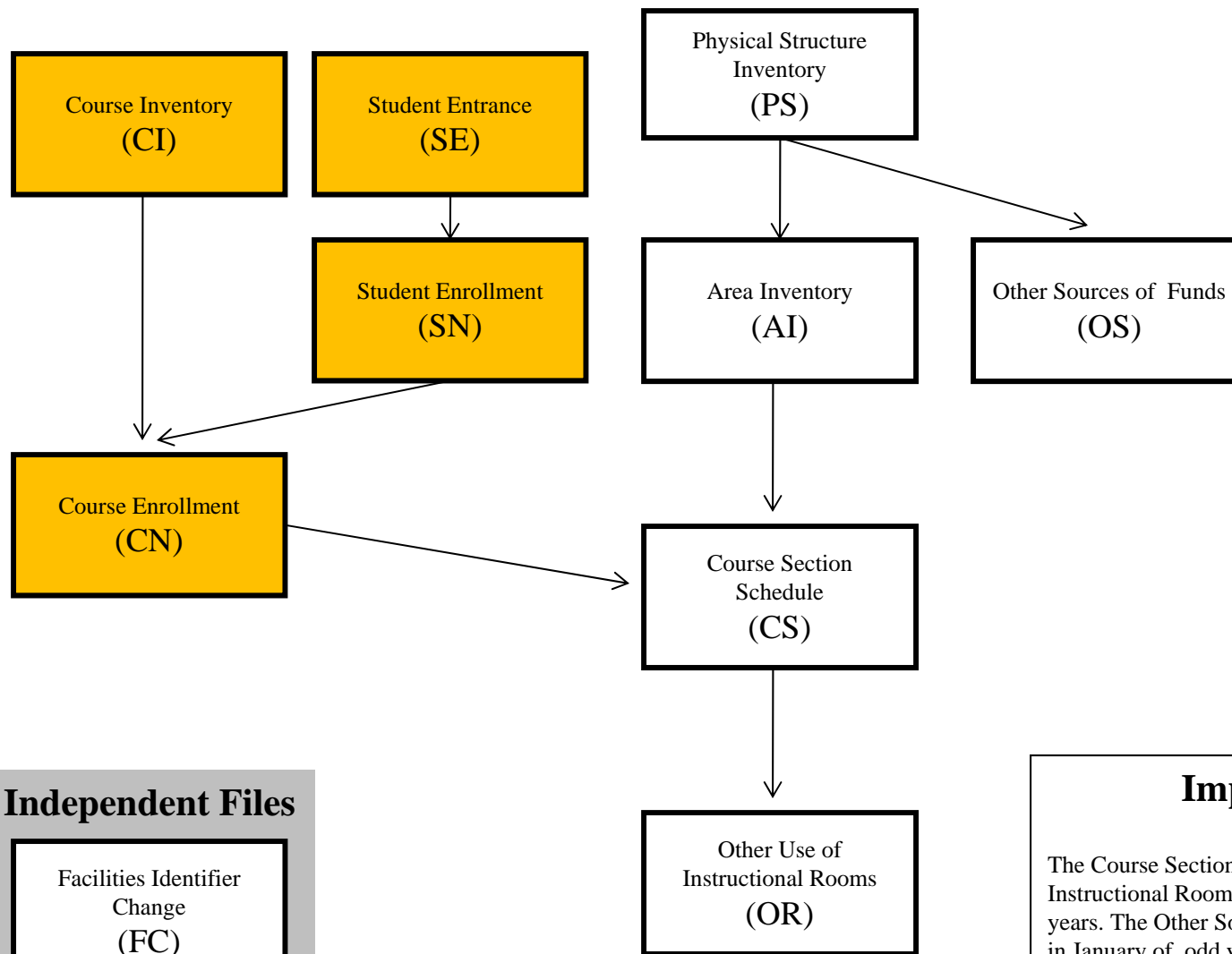


**FACILITIES FILES**  
(Annual Submission)

# Facilities File Dependencies

Revised August 17, 2009

**ENROLLMENT  
FILES**



## Important Note

The Course Sections Taught (CS) and Other Use of Instructional Rooms (OR), are only submitted for odd years. The Other Sources of Funds (OS) is submitted in January of odd years for the prior two years.